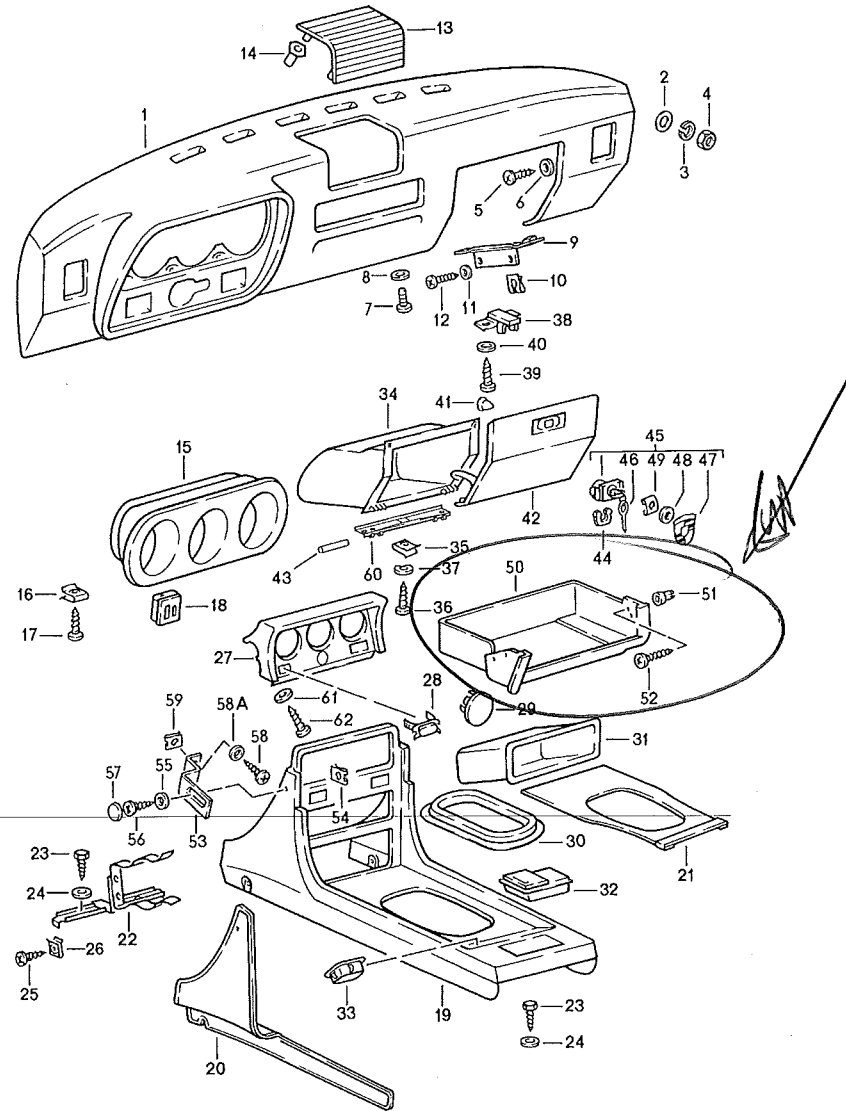


Model	Year	MG	SG	Illustration	Restrictions	UPD	21:20	23.01.2010	PORSCHE	PET	PORSCHE
944	1985	8	09	809-00		248					



Pos	Part Number	Description	Remark	Qty	Model
1	477 857 881 C	dashboard	/LL	1	
	1DB	black	-6.82		
	4RB	brown			
(1)	478 857 881 C	dashboard	/RL	1	
	1DB	black	-6.82		
	4RB	brown			
1	477 857 881 A	dashboard	/LL	1	
	1DB	black	7. 82-		
(1)	478 857 881 A	dashboard	/RL	1	
	1DB	black	7. 82-		
2	N 011 612 3	washer R 7		2	
3	N 012 036 1	lock ring 6		2	
4	900 076 010 02	hexagon nut M 6		2	
5	900 143 007 02	tapping screw B 4,2 X 13		4	
6	900 151 028 02	washer B 4,3		4	
7	N 014 140 5	oval-head screw M 6 X 15		1	
8	N 011 524 7	washer A 6,4		1	
9	477 857 195 B	support	/LL	1	
10	N 015 429 2	speed nut	/LL	2	
11	900 025 002 02	washer A 4,3	/LL	2	
12	N 013 964 4	tapping screw B 4,2 X 16	/LL	2	
13	477 857 187	loudspeaker grille		1	
	01C	black			

Model	Year	MG	SG	Illustration	Restrictions	UPD	21:20	23.01.2010	PORSCHE	PET	PORSCHE
944	1985	8	09	809-00		248					

Pos	Part Number	Description	Remark	Qty	Model	Pos	Part Number	Description	Remark	Qty	Model
28	944 552 387 00	cover		1		42	477 857 123 A	glove compartment cover	/LL	1	
29	841 863 267	cover	(J)	1			4RB	brown			
	041	black				(42)	478 857 123 A	glove compartment cover	/RL	1	
30	477 857 975	support frame		1			4RB	brown			
	01C	black				43	N 013 209 2	straight pin 4 H 8 X 36		2	
	89S	brown				44	133 857 119	clamp		1	
31	481 857 233 A	package box		1			01C	black			
32	944 552 305 00	ashtray		1		45	477 857 133 C	lock with keys		1	
	1DB	black					01C	black			
	4RB	brown					90V	brown			
33	911 552 469 00	cover		X		46	477 857 135 A	blank key		2	
34	477 857 095 B	glove compartment F >>94DN4 08113		1		46	477 857 136 A	key with stipulated lock number state lock number		1	
(34)	477 857 095 C	glove compartment F 94DN4 08114>>		1		47	944 559 097 00	crest		1	
35	999 507 252 02	nut B 3,9 X 16,5		2		48	N 011 536 1	washer A 2,2		1	
36	N 013 962 3	tapping screw B 3,9 X 16		5		49	N 012 852 1	clamping washer		1	
37	N 011 692 3	washer		5		50	477 857 836	shelf		1	
38	477 857 143	lock bearing		1			01C	black			
	01C	black					89S	brown			
39	900 143 007 02	tapping screw B 4,2 X 13		2		51	477 857 173	clip	/LL	1	
40	900 025 002 02	washer A 4,3		2		52	N 043 940 3	tapping screw B 4,8 X 25	/LL	1	
41	N 020 022 3	stopper A 8 X 1		1		53	477 857 941	bracket		2	
42	477 857 123	glove compartment cover	/LL	1		54	N 015 422 2	speed nut		2	
	1DB	black				55	900 151 028 02	washer B 4,3		2	
(42)	478 857 123	glove compartment cover	/RL	1		56	311 867 167	tapping screw		2	
	1DB	black				57	311 867 169	cap		2	